

LASER DECAPSULATION

POWERFUL TECHNOLOGY IN A CUBE

FA CUBE

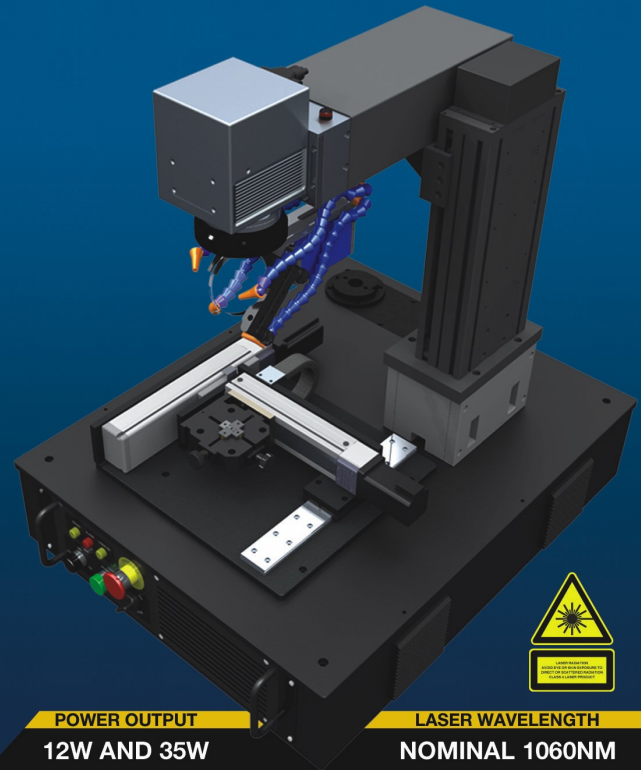
- ✓ **NEW** camera system with **fixed optic choices**
- ✓ **Optional low profile X-Y** stage table (150mmx150mm)
- ✓ Compact, rugged, and mobile design
- ✓ Space saving and 'eco-friendly'
- ✓ Limited workspace and viewing window
- ✓ Standard **motorized Z axis** for accuracy
- ✓ **Essential** FA Cube Intuitive software with Decap abilities
- ✓ Expose lead frame and bond wires **without acid**
- ✓ Partially decap die as precursor to acid

DIMENSIONS

L28.3" x W22.5" x H31"

LASING AREA

L9" x W11.75" x H2"



POWER OUTPUT
12W AND 35W

LASER WAVELENGTH
NOMINAL 1060NM

APPLICATIONS:

die decapsulation

bond inspection

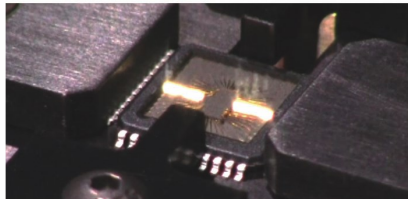
wire pull testing

bond wire inspection

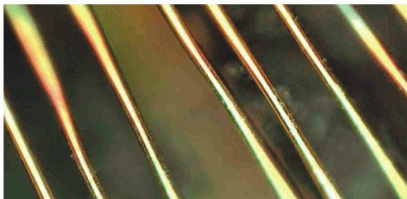
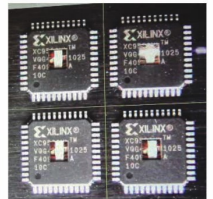
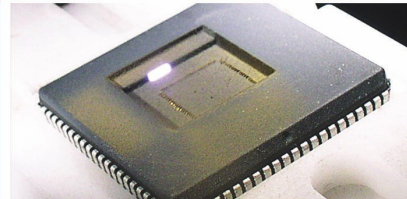
prototyping



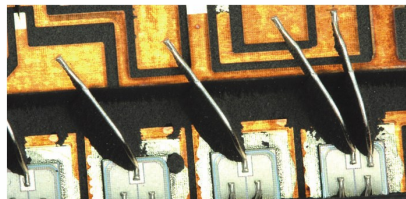
Component
Inspection



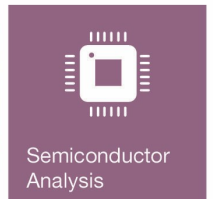
Process In
Seconds



Safe For
Copper
Gold
Silver
Aluminum bond
wires
and more...



SOT23 COMPONENT



Semiconductor
Analysis

VISIT WWW.CONTROLLASER.COM

FAILURE ANALYSIS SOFTWARE INCLUDED



We are the premiere laser source for manufacturing companies in the **automotive, aerospace, defense, medical, solar, assembly, and fabrication** industries.



GAOTEC SDN. BHD.

GAOTEC SOLUTIONS PTE LTD

Sales: + 65 6491 5675

Service: + 65 6491 5675

sales.solutions@gaotec.com | www.gaotec.com

New FA Cube Failure Analysis Software packed inside!

- › Standard Decapsulation Tools
- › Control size + Shape of decap areas
- › Basic Laser Parameter Adjustment Tools
- › Control side wall angle + depth

Optional Software Tools:

Gasket Module | Polygon Tools/Ortho Mode
Reverse Mode | Text Mode | Image Import
Template Creation | Recipe Manager

