



Fixed Industrial Scanners

Move goods at the speed of demand



When it comes to automating your supply chain, you want a leader you can count on...

When it comes to choosing a provider for your fixed industrial scanning solutions, you want the best.

You want a leader you can count on.

A leader who can support your operations no matter where in the world they are located.

A leader with proven technology — technology that companies all around the world count on every day to run their businesses, including the majority of the Fortune 500.

A leader that is constantly innovating, on the cutting edge of developing and delivering solutions that continually improve workforce productivity, process efficiency, the user experience — and profitability.

A leader whose technologies deliver a true performance edge.

Zebra delivers it all.

~6,800 patents
and patents pending
Constantly innovating to bring
you leading edge technology

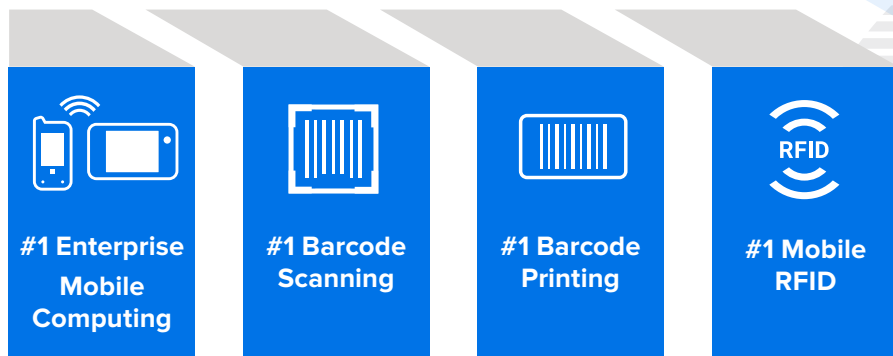
50+ years of innovation
A company you can count on
today...and tomorrow

\$4.58 billion in sales¹
Best-in-class solutions
embraced globally

Global reach
Support in virtually every
corner of the world...

122 facilities globally

10,000+ channel partners
in over 185 countries



1. 2023 Revenue data

2. VDC Research and Zebra analysis; Gartner Inc., "Magic Quadrant Indoor Location Services" Tim Zimmerman, Annette Zimmermann, 23 February 2022 (Leader Status)

Introducing Zebra's Fixed Industrial Scanning solutions



Easy to set up,
deploy and run

Proven
industry-leading
technologies

Upgradeability —
add features with
a software license

One software
platform to manage
the entire portfolio

Move goods at the speed of demand






Supply chain efficiencies have never been more integral to business success. Shoppers purchasing goods anywhere and anytime with ever-increasing expectations for faster delivery put tremendous pressure on your manufacturing and distribution operations to create and move more goods, faster than ever. And with Zebra's Fixed Industrial Scanners, you can.

Whether you are reading barcodes to ensure the right part is being used at the right time on your production line or to track and trace finished goods as they move into, through and out of your facility, our solutions instantly transform your data into actionable business information that enables error-free actions. Productivity and quality improve across your operations, from manufacturing through packaging and distribution. And the flawless movement of perfect products from the production line to the customer allows you to outperform your objectives — and exceed your potential.

Zebra's Portfolio of Fixed Industrial Scanners

**Buy the features you need today...
upgrade to the features you need tomorrow**

Track and trace items traveling on the conveyor or through key portal transition points in manufacturing plants, distribution centers and warehouses with Zebra's Fixed Industrial Scanners. Whether you need simple and straightforward capture of barcodes on package labels to the complex capture of printed and direct part marked barcodes of varying sizes at varying distances, there is a model built to meet your needs. And when your needs change, you can simply upgrade the Zebra Fixed Industrial Scanners you purchase today to meet new business needs tomorrow. This uniquely-Zebra device architecture protects your investment — you'll never need to retire devices early when you need new functionalities. Whether you want to capture new types of data — such as Direct Part Marks (DPMs) or Deep Learning-based OCR — or add machine vision capabilities, you can address it all with the simple purchase of a software license. The result? A guaranteed maximum return on the fixed industrial scanner investment you make today.

Fixed Industrial Scanners					Connectivity Gateway
					
FS10 Compact fits-anywhere plug and play scanning for basic offline track-and-trace applications.	FS20 Easily integrate compact plug-and-play high-quality scanning into a PLC or Host network.	FS40 Comprehensive features for sophisticated track-and-trace applications.	FS42 Powerful processor for high-speed scanning and deep learning-based-OCR applications.	FS70 Completely customizable to enable the most challenging track-and-trace applications.	GS20 Take production line throughput to the next level with the GS20's next generation scan tunnel architecture. Aggregates all the data from up to 16 cameras and sends only the information required to the host application, substantially increasing scanning speed.
Want to boost scanning functionality? Upgrade your Decoder Package to add support for new symbologies and faster frame rates to accommodate faster conveyor speeds					
Want to add machine vision capabilities? Upgrade to any Machine Vision (MV) toolset to turn your Fixed Industrial Scanner into a Machine Vision Smart Camera					
When it comes to improving operational efficiency and error-proofing everyday tasks in the supply chain that are crucial to business success, Zebra's fixed industrial scanning portfolio delivers.					

Zebra Aurora Focus™ software

One single software platform to manage it all



Aurora Focus brings a new level of elegance and simplicity to the control of enterprise-wide manufacturing and logistics automation solutions. With this single unified platform, you can easily manage all Zebra Fixed Industrial Scanners and Machine Vision Smart Cameras, eliminating the need to use different applications to control different types of capabilities.

Simplified management — easy to setup, deploy and run

The highly intuitive modern interface presents logical workflows. No need to hunt for needed features and functions — they are just a click or two away. And even complicated settings are easy to execute, presented as sliders and radio buttons.

Designed for beginners and experts

First-time users can easily navigate through the well-designed management platform, which guides them through all the steps in the proper order. Experienced users will appreciate easy access to all functions and streamlined processes that substantially reduce the time and number of clicks it takes to perform tasks.

Single tool simplicity for reduced ramp up and training time

The architecture of your industrial automation solutions is simpler — your workers only need to learn one tool, minimizing training time and effort.

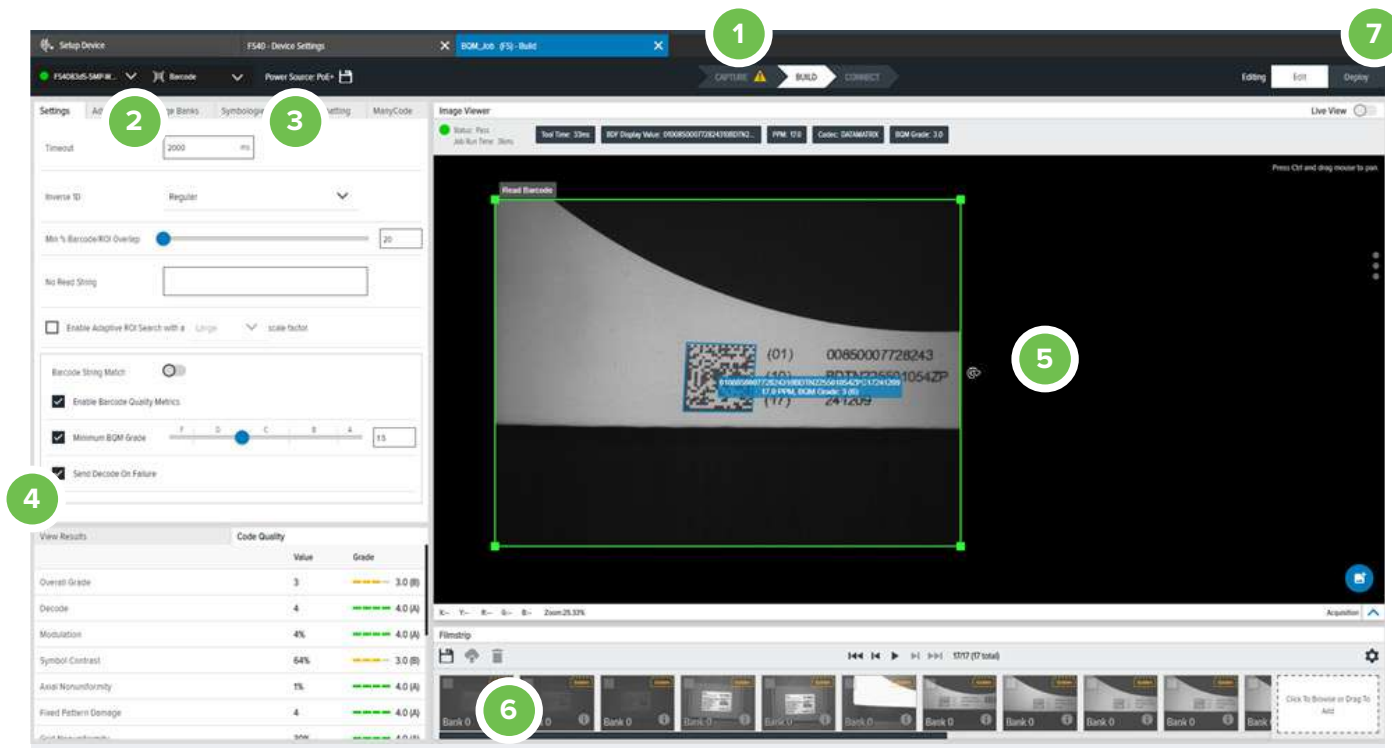
Real-time performance insights with the Web HMI dashboard

Access key metrics for every camera from your web browser including device health, resource utilization, decode results and scan performance metrics.

Zebra Aurora Focus in action

Job Setup: make complex functionality simple

Setting up a job can be a tedious and time consuming task, but with the intuitive and user-friendly interface in Aurora Focus, it's easy. All of the controls you need are exposed at the right level, so you're never more than a click or two away from what you need to complete the task at hand.



1

The workflow

Organized into 3 easy and logical steps:

Capture

Configure to achieve the best images for your job. Set the exposure, gain, focus, Illumination control and more.

Build

Create your jobs — quickly add and configure the tools you need to get it done.

Connect

Interface with your systems. Setup and customize PLC communications, GPIO behaviors and define the key data you want to send out.

2

Tool menu

Tools are organized by tool category and are easy to find.

Click on the Tool Category to reveal the drop-down box of tools for that category.

Type the tool you are looking for in the search box.

5

QuickDraw

Adding tools has never been so easy and fast. Just draw a box around the area you want to inspect, right on the image, then choose and configure your tool.

3

FlowBuilder*

Create the required Toolbox for your job.

View the Toolbox at-a-glance to see the entire flow for a job.

Drag and drop to move a Toolbox.

Copy/paste to create a quick starting point for a similar tool.

6

Filmstrip

Images you capture and save during the build or deploy state appear here for easy access.

4

Toolbox

Allows users to adjust settings and quickly configure tools to solve their application. With slider bars, check boxes and radio buttons, tool configuration is easy — no need to program and no intimidating user-interface.

7

Deploy

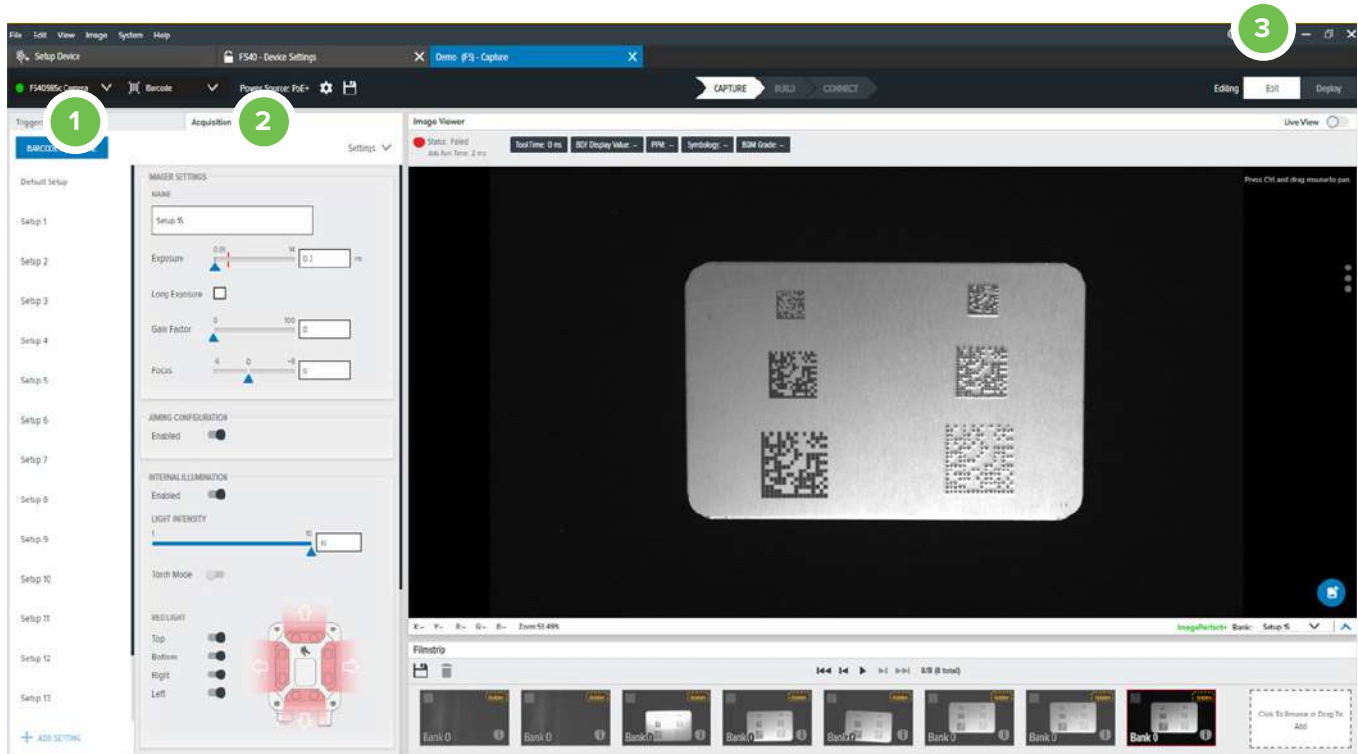
Just click to push your job to the camera and start running the job.

* FlowBuilder feature available for devices upgraded with machine vision toolsets.

Zebra Aurora in action

Achieve image perfection with ImagePerfect+

Want your system to work perfectly? Unleash Zebra's ImagePerfect+ technology. Automatically create up to 16 images in one trigger event to create the perfect result. Handle lighting, part variation, inspections with different focal depths and more with ease. The result? The need for multiple cameras, external lights and complex custom code is eliminated, replacing solution complexity with solution success — and a lower total cost of ownership.



1

ImagePerfect+

This groundbreaking feature allows the capture of up to 16 images per trigger event. Each of the images can have its own unique settings for exposure, gain, illumination control and more.

2

Image settings

It's easy to configure the right settings for image capture — simply adjust the sliders and click radio buttons to adjust exposure, gain, focus and lighting to get the perfect image.

3

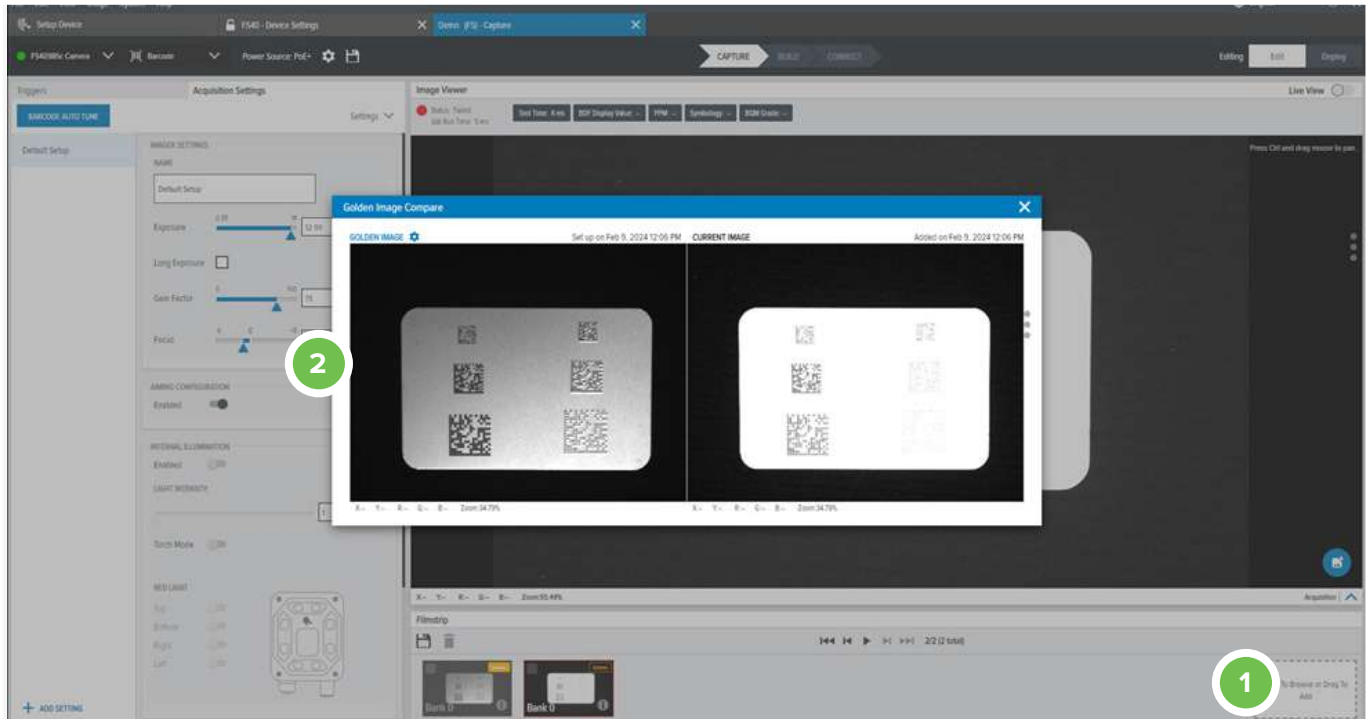
Real-time Live View

Just click to turn on Live View so you can see what the camera sees in real time, making it easy to define the perfect settings.

Zebra Aurora in action

Easy troubleshooting with Golden Image Compare

When barcodes or jobs fail, this unique Zebra-only tool enables rapid troubleshooting and issue resolution, minimizing downtime. In just two clicks, you can view the image that failed and a golden image created at setup, side by side, revealing the source of the issue — from a dirty lens or a lighting problem to misalignment of the camera.



1

Select the current image

To start the side-by-side comparison, just click to select the current image from the live camera.

2

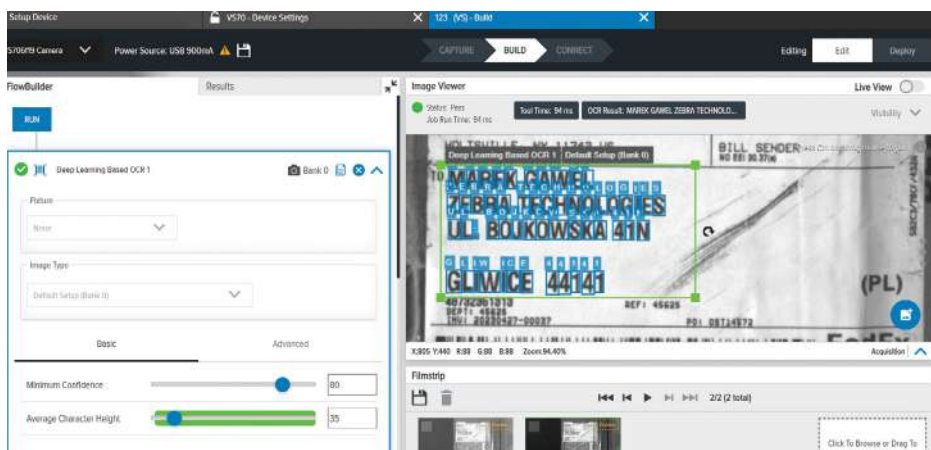
Select the Golden Image

Select the Golden Image captured during setup. The images appear side-by-side, enabling a rapid diagnosis of the root cause of the issue.

Zebra Aurora in action

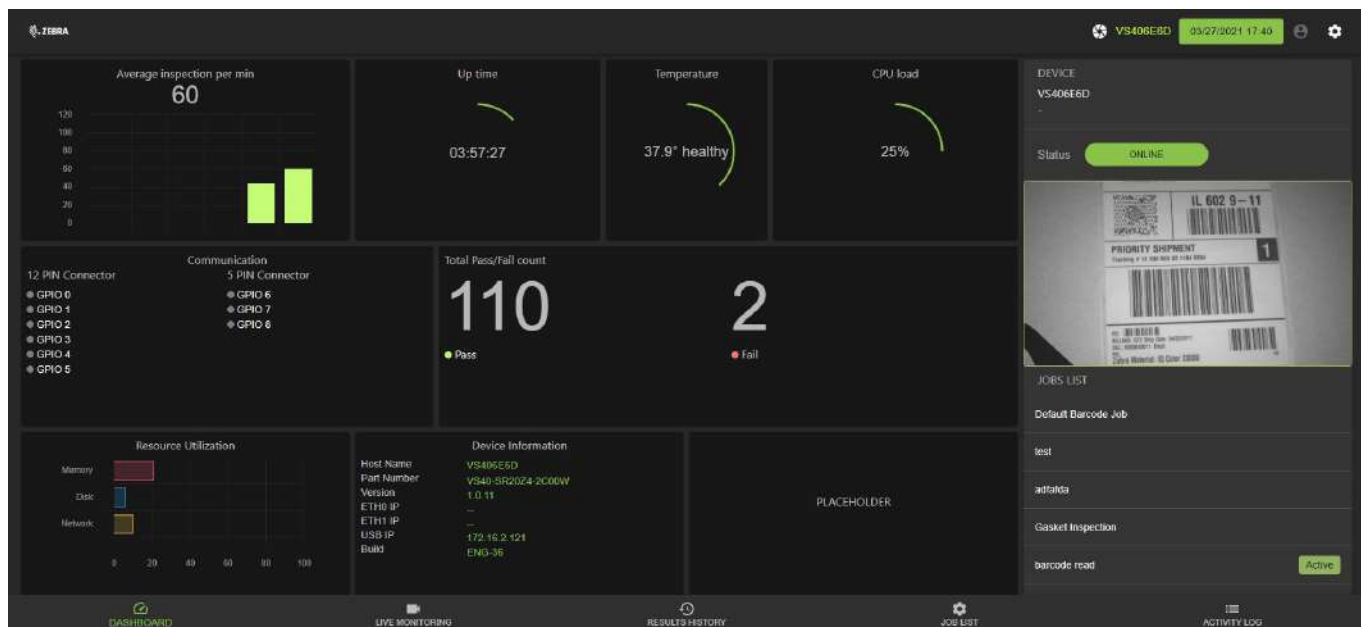
Deep Learning-Based OCR tool

Easily capture text information on parts, labels and more with the Deep Learning-Based OCR Tool. Setup is simple — just draw a box around the text you want to read for text information that is in a fixed position. Whether you need to capture text on parts on the production line or labels on boxes, with support for printed, engraved, solid, dot-formed and direct part marking, this tool makes it easy to capture it all. Using state-of-the-art techniques based on Artificial Intelligence eliminates the need for font training — there's no need to sample all possible fonts and all of their variations. Text is captured, regardless of how it is printed, the surface it is on or the way the code is illuminated — and even tough-to-read and low-contrast characters on confusing backgrounds are easy to read.



Web HMI Dashboard for easy monitoring

Put actionable intelligence at the fingertips of your operators without the need to buy and install a PC at every station, simplifying and reducing the cost of your automation solution architecture. The dashboard enables operators to see and interact with the data. And the dashboard can be viewed via any web browser or by directly connecting a monitor to the Fixed Industrial Scanner.



Just a few of the many Zebra-only unique Aurora Focus features that drive unsurpassed performance into our products — and your organization

Advanced features, available only from Zebra



ImagePerfect+

Capture up to 16 images* with a single trigger event, each with its own unique settings to ensure the capture of the perfect image

Golden Image Compare

When a barcode or image capture fails, quickly identify and resolve the issue

Advanced Filtering and Formatting

Customize rules and actions by symbology type, character set, barcode length and more

Leader/Follower

Built-in configuration flexibility for scan tunnel and dock door scanning applications

Web browser-based HMI Dashboard

Display live operation of the camera from a web browser or direct connection to a monitor through USB-C — no need to run or install Zebra Aurora Focus software

Deep Learning-based OCR

Leverage AI-derived tools to quickly read a variety of fonts without training within a user-defined region of interest.

Zebra Easy Text Interface (ZETI)

Issue device commands directly from the host via TCP/IP Telnet for streamlined device setup and management

* Only applicable with the FS40, FS42, and FS70 models.

The Anatomy of the FS42

A look at the hardware advantages

FS42 Fixed Industrial Scanners are packed with hardware features that make these devices easy to setup, deploy and run in industrial environments.

Modular and powerful illumination

White, Red, IR or combined LED boards. wavelength band-pass color filter, wavelength and polarizing filters

Liquid Lens

Standard 30 degree and wide angle 46 degree

Power and I/O

10-30VDC, PoE, USB Power, 9 configurable I/O ports

USB-C

Power and peripheral support; USB 3.0 SuperSpeed Type-C with DisplayPort and Alt Mode

External Light Connector

Power and intensity control for external lights

User Interface

Trigger, Auto-Tune, Status-LEDs

PRZM Intelligent Imaging

First-time every-time data capture

Sensor Resolution

2.3 MP

Ultra-rugged design

IP65 and IP67 sealed

M12 Gigabit Ethernet

X-Coded Ethernet/IP, PROFINET, Modbus TCP, TCP/IP, RS-232, Dual Ethernet Port option available

360° LED Indicator

Pass/Fail




Accessories


No matter which model or models you use in your facility, our accessory family has you covered. From power supplies and external lights for every model to model specific accessories, such as internal lighting for the FS42 and C-mount lenses for the FS70.




For more details, see the Fixed Industrial Scanners Accessory Catalog, available on [Zebra.com](https://www.zebra.com)


Key applications

 **Dock Door Scanning**



How it works	Top benefits
<ul style="list-style-type: none">• Two or more fixed industrial scanners are mounted in an arch on either side of the loading door.• Forklift passes through the arch and fixed scanners capture barcode data at high speeds.• Data is relayed to the forklift's onboard computer, which confirms that onboard pallet is correct.• Automated system accurately scans the labels, saving time and increasing shipping output.	<ul style="list-style-type: none">• Better inventory accuracy: Dock door scanning helps reduce discrepancies and ensures accurate stock levels.• More efficient order fulfillment: Dock door technology enhances order accuracy and speeds up the picking and packing processes.• Improved operational visibility: Building smarter and more connected environments delivers better visibility to make informed decisions and improve business outcomes.

 **Scan Tunnels**

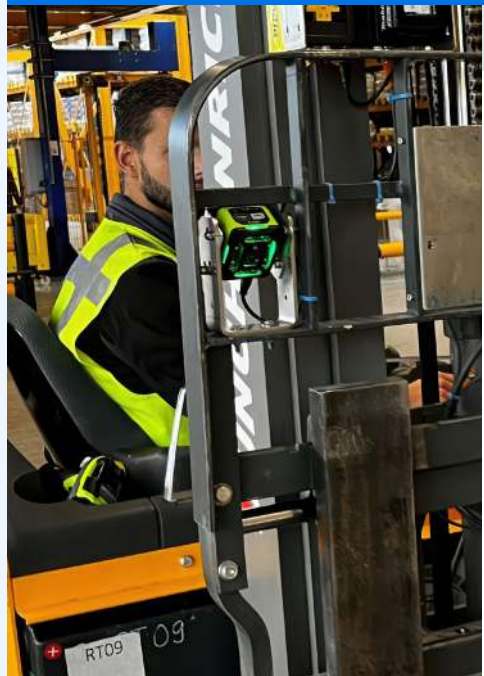


How it works	Top benefits
<ul style="list-style-type: none">• One or more scanners or smart cameras are mounted to a gantry that spans the conveyor line.• The array of high-tech cameras captures all sides of a parcel, reading barcodes and other machine-readable text.• As items move through the scan tunnel, the system captures data in real-time.• Intelligent software decodes data stored in barcodes to route packages appropriately.	<ul style="list-style-type: none">• Better barcode reading and verification: Improve tracking, tracing and inventory management through rapid and accurate verification of barcodes, preventing costly errors in shipping and logistics.• Improved product inspection: Improve quality control and compliance through automatic and accurate inspection of items for defects, contamination or damage and automatically diverting problematic products from production lines.• Labor reduction and cost savings: Reduces the need for manual inspection and handling, saving costs and increasing throughput.

Key applications



Forklift Truck Scanning



How it works

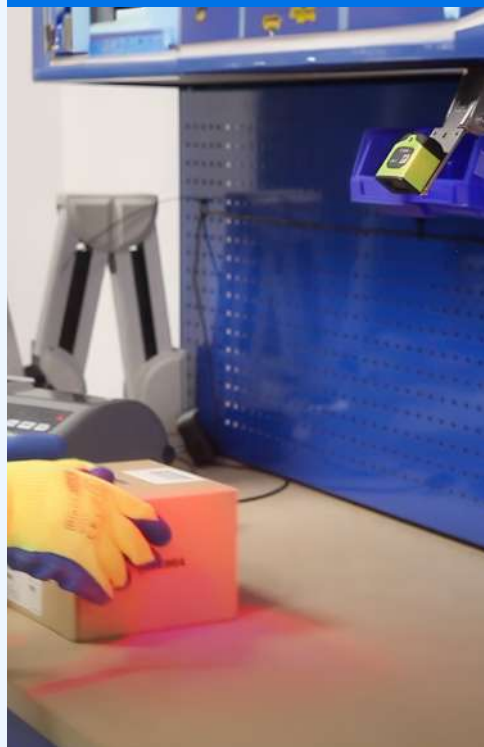
- Two fixed industrial scanners or smart cameras are mounted on the front of the forklift between its tines, acting as the eyes of the vehicle.
- When the forklift approaches a pallet, the scanners automatically scan labels and transmit the captured data to the forklift's onboard computer.
- Data transfer is wired or wireless, depending on region and unique installation requirements.

Top benefits

- **Better inventory accuracy:** Machine vision-equipped forklifts automatically capture data from barcodes, RFID tags or visual cues, reducing the need for manual documentation and improving inventory accuracy.
- **Picking and putaway efficiency:** Machine vision technology guides forklift operators to the precise location of items, improving picking and putaway efficiency and reducing errors.
- **Fewer operational errors:** Reduced human intervention improves data quality and accuracy and streamlines operations.



Pack Bench








How it works

- A fixed industrial scanner and a smart camera are mounted over the packing station to capture real-time data.
- The operator places a box under the scanner, which will flash green and beep, providing visible and audible cues for successful decodes.
- Plug scanners directly into the USB port of a workstation, laptop, tablet or other host device to begin capturing barcode data immediately.
- FS scanners also connect directly to handheld devices for even faster operations.

Top benefits

- **Greater efficiency:** Adding fixed industrial scanners to existing warehouse processes improves inspection capabilities like volume verification and package integrity assessment.
- **Better speed and productivity:** Packing benches streamline high-volume warehouse process by reducing manual inspection time, automating label creation with a Zebra printer, and automating quality checks.
- **Enhanced quality control:** Packing errors can result in costly returns and unsatisfied customers. Packing bench solutions minimize errors through automated verification and content validation.

Which model is right for your application?

					
Model	FS10	FS20	FS40	FS42	FS70
General Description	Compact fits-anywhere plug-and-play scanning	Easily integrates into your network	Comprehensive features for extraordinary flexibility	Powerful processor for high-speed scanning	Completely customizable to meet unique scanning needs
Applications	Ideal for use cases over short distances with tight space constraints	Ideal for use cases over short and medium working distances	Ideal for medium and long working distances, such as scan tunnels and dock doors	Ideal for medium and long working distances for high-speed scanning and DL-OCR	Larger field of view (FOV) use cases
GENERAL FEATURES					
Connectivity	Plug and play USB	Built-in Ethernet network support	Built-in network support and Power-over-Ethernet (PoE) Dual Ethernet option		Built-in network support and Power-over-Ethernet (PoE) Dual Ethernet option
Sensor/Lens	1 MP	1 MP	2.3 MP	2.3 MP or 5.1 MP Any external C-mount lens	
Leader/Follower	Yes	Yes	Yes	Yes	
Lighting	Powerful integrated lighting (red and white LED)	Powerful integrated lighting (red and white LED)	Extensive options — internal and external		Any external lighting solution
I/O Ports	Not available	4 programmable	9 programmable		9 programmable
Power	4.4 to 5.5 VDC host powered	Standard PoE, 24 VDC power supply	PoE+, 24 VDC power supply, USB-C		PoE+, 24 VDC power supply, USB-C; 10 to 30 VDC external power supply
Indicators	3 status LEDs: Decode, Power, Online/Run + beeper	4 status LEDs: Decode, Power, Online/Run, Ethernet + beeper	5 status LEDs: Decode, Power, Online/Run, Ethernet, Focus Warning, Error + beeper 360° Decode status lights — visibility on all sides		5 status LEDs: Decode, Power, Online/Run, Ethernet, Focus Warning, Error + beeper 360° Decode status lights — visibility on all sides
USB-C for Expansion	Yes	No	Yes		Yes
Aiming	Amber LED for easy aiming	Amber LED for easy aiming	Laser starburst for fail-proof aiming simplicity		Not applicable
Other Shared Features	Automatic setup with Auto-Tune; ultra-rugged IP65/IP67, chemical and oil resistant aluminum housing; operating temperature for all models: 32° F to 113° F/ 0° C to 45° C; storage temperature for all models: -40° F to 158° F/ -40° C to 70° C				

Aurora Focus Connectivity Gateway:

Easily increase package tracking, sorting efficiency and throughput

Zebra Aurora Focus connectivity gateway functionality allows Zebra FS devices to be designated as a leader or follower network. The technology helps warehouse, manufacturing and logistics customers scale operations, improve scanning performance and easily synchronize and configure multiple devices. The connectivity gateway allows not only tight multi-device synchronization but also integration with other devices, including tablets, printers, handheld scanners and scales.

For higher throughput applications, such as multi-sided scan tunnels, Zebra's GS20 designated leader module supports up to 16 cameras. The GS20 rapidly aggregates and processes all captured scan data, and sends only the information required by the host application.



GS20 Specifications

Configuration IO

4 GPIO; 2 dedicated inputs; 2 dedicated outputs

Interface Ports

Ethernet; Power/GPI/Serial

Power

PoE; 10 to 30 VDC power supply

Rugged

Ultra-rugged; IP65 and IP67; chemical and oil resistant aluminum housing; vibration and shock tested

Host Communication

PLC; TCP/IP; Serial; GPIO

Follower Devices

Scanners, printers, tablets and third party devices such as scales

Zebra OneCare™ Maintenance and Support Services

Unwavering support around the clock and around the globe

Your Fixed Industrial Scanners play a critical role in your business operations. Get the constant peak performance and device uptime your business demands with Zebra OneCare™ Essential and Select Maintenance plans.

Zebra OneCare Essential provides around-the-clock support including comprehensive coverage for normal wear and tear and accidental damage, live agent technical support Mon–Fri 8–5 local time, 3-business day turnaround time, software updates and patches. For advanced device replacement and next-business day shipping, you have Zebra OneCare Select. Both plans provide you with 3- or 5-year coverage according to your needs.

Service features at-a-glance

Feature	Zebra OneCare Technical and Software Support (TSS)	Zebra OneCare Essential	Zebra OneCare Select
	Standalone technical and software support	Core assurance	Maximum protection
Live-agent support	Mon-Fri, 8 to 5 local time	Mon-Fri, 8 to 5 local time	24/7
Repair turnaround time		3-day repair turnaround	“Like-new” replacement device ships for next day delivery
Coverage		Accidental damage and normal wear and tear	Accidental damage and normal wear and tear
Software updates	✓	✓	✓
Cloud-based visibility into repair, and more with VisibilityIQ OneCare	✓	✓	✓
Spares Pool Management	✓	✓	✓





For more information about Zebra's Fixed Industrial Scanners, visit www.zebra.com/fixed-industrial-barcode-scanners



NA and Corporate Headquarters
+1 800 423 0442
inquiry4@zebra.com

Asia-Pacific Headquarters
+65 6858 0722
contact.apac@zebra.com

EMEA Headquarters
zebra.com/locations
contact.emea@zebra.com

Latin America Headquarters
zebra.com/locations
la.contactme@zebra.com

ZEBRA and the stylized Zebra head are trademarks of Zebra Technologies Corp., registered in many jurisdictions worldwide. All other trademarks are the property of their respective owners. ©2024 Zebra Technologies Corp. and/or its affiliates. 07/2024.