

INSTAMARK



Mark and engrave anything ranging from vector shapes to custom fonts. Surface anneal, etch, and deep engrave a wide variety of metals and plastic composites.

Alpha-numerics, graphics, and barcodes can be marked at extremely high speeds using our state-of-the-art high-speed galvo head.

TYPICAL APPLICATIONS:

INDUSTRIAL PARTS
TOOL MARKING
PART IDENTIFICATION
PRODUCT BRANDING
CREATIVE PROJECTS
LABELING
DATE CODING
SERIALIZATION
BARCODING
ASSEMBLY LINES

SOFTWARE TOOLS

BARCODE GENERATION
STEP & REPEAT
SIMULATE LASE MODE
RED DOT POINTER
SHAPE TOOLS
ALIGN TOOLS
LAYERS & GROUPS
CUSTOM FONT SUPPORT
BITMAP/LOGO IMPORTER
AND MORE!

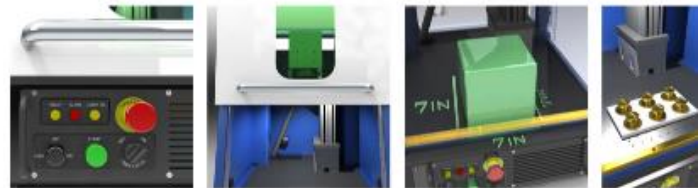


Windows® 7 Pro

LMS™ 3.0 Software

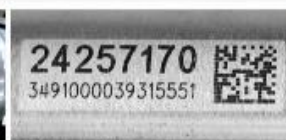
The **InstaMark®** is capable of marking and engraving the widest range of materials such as **steel/stainless, aluminum, titanium, copper, ceramics, and some plastics.**

Choose between a **Q-Switched** or **MOPA Fiber Laser** type and power level.



Optimal Performance in a Wide Range of Industrial Applications

- ✓ IR Fiber Laser System
- ✓ Transformable CDRH Class I/II Workstation to Class IV
- ✓ Vertical Sliding Access Door with Interlocks
- ✓ Laser Safe Viewing Window
- ✓ Programmable Z Axis
- ✓ Fixture Mounting Plate
- ✓ Enclosure Illumination and Exhaust Port
- ✓ Windows® 7 Laptop Included
- ✓ New Compact Cube Enclosure - 28.3" x 22.5" x 31" (LxWxH)



SALES +65 6491 5675

SERVICE +65 9001 1710



INSTAMARK

AFFORDABLE IR FIBER LASER SYSTEM

Internally developed for over 50-years, the most powerful laser software on the market today

The software powering the InstaMark™ is none other than our most versatile and easy-to-use, **Laser Marking Studio 3.0**. We've included an on-screen job builder, real-time laser status system, pre/post events for automation, part alignment features, drag and drop logo and graphics, part array and fixture setup, and much more.

Our software allows operators to **easily create jobs, laser graphics, 1D and 2D barcodes, and text in fancy fonts with creative freedom**, while offering complete control.

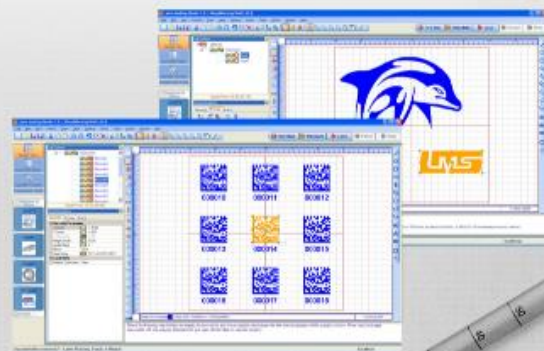
Key Features of LMS Software Include:

- ▶ Graphics and logo Import (most vector/raster file types)
- ▶ True Type Fonts and Custom Laser Font Support
- ▶ Barcode Generator (UPC, Data Matrix, UID, QR, and more)
- ▶ Logo and Text Auto-Filling
- ▶ Desktop Simulation Mode (Pre-Lase Testing)
- ▶ System Security with Multiple User Level Access
- ▶ Built-In Axis Controls
- ▶ Remote Laser Networking Capabilities



VERSION 3.0

Powerful, Intuitive, Simple.



LASER POWER OUTPUTS

20W | 30W | 50W

LASER WAVELENGTH

IR 1064NM

INDUSTRIES:

tools & tooling

automotive

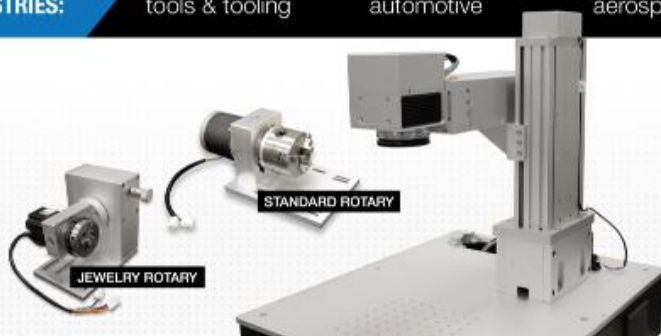
aerospace

defense

electronics

medical

energy +



Product Options & Accessories



Lens

Different size lenses can alter laser marking area size and mark quality; 7in lens included.

Available: 4in 7in 9in 12in



Maintenance Kits & Accessories

Laser safety glasses, IR viewers, power meters, barcode scanners, conveyor units, and other accessories are available with our laser systems.



Rotary Indexing Units

Compact rotary add-on allows circumferential marking onto cylinders and spheres.

Available: Standard and Jewelry Units



SYSTEM SPECIFICATIONS

Laser Type	Q-Switched or MOPA Fiber Laser
Wavelength	IR 1064nm
Pulse Width	100 ns
Power	20W 30W 50W
Marking Area	24" x 36"
Laptop	Windows® Laptop Included
System Power	115 VAC 50/60Hz (230 VAC Optional)
Operating Temperature	40°F to 90°F Ambient
Relative Humidity	10% to 95% non-condensing
System Software	Windows® 7
Measurements (LxWxH)	28.3" x 22.5" x 31"
Network Connection	For Remote Diagnostics

2-Day Acceptance & Training at CLC (Travel at customers expense)

Two Year Production First Warranty

Includes Basic Remote Diagnostics - This allows the laser system to be run and diagnostics tests to be performed from the factory. High Speed internet access is required for this feature.

Above specifications are subject to future technical changes



GAOTEC Sdn. Bhd
GAOTEC Solutions Pte. Ltd
www.gaotec.com



CLC controllaser
visit us at www.controllaser.com