

SNAP 300 offers simple walk-up and measure capability. Simply place the part on the worktable and press GO. SNAP 300 includes

- **Automation Speeds Throughput** – SnapShot identifies and measures features instantly – without programming. Measured results are easily reported and exported.
- **Telecentric Optics** – Ensure accurate measurements across the wide field of view with low distortion – even when not perfectly focused. Zoom Anywhere technology instantly zooms the image anywhere in the wide field of view to measure small features instantly.
- **Simplicity and Value** – OGP dual mag optics, three light sources, a large field metrology camera, a 250 mm X axis with a 50 mm Y axis, and an available 10x lens make SNAP 300 a strong choice when increased throughput and higher magnification is critical.

Compact, Large Field of View Video Measuring Machine with Motorized XY Stage Motion

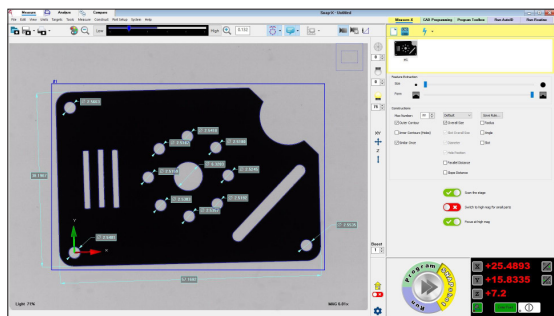


Rugged construction and an open work envelope make SNAP easy to implement in virtually any manufacturing setting.

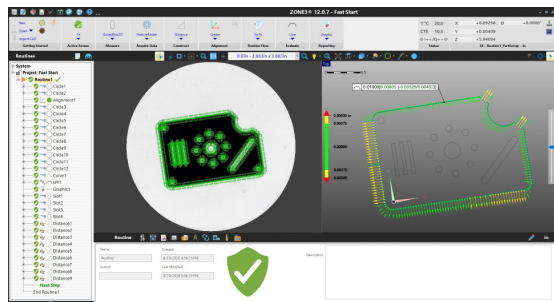
Measurements Made Simple

Choice of Measure-X® or ZONE3® Metrology Software

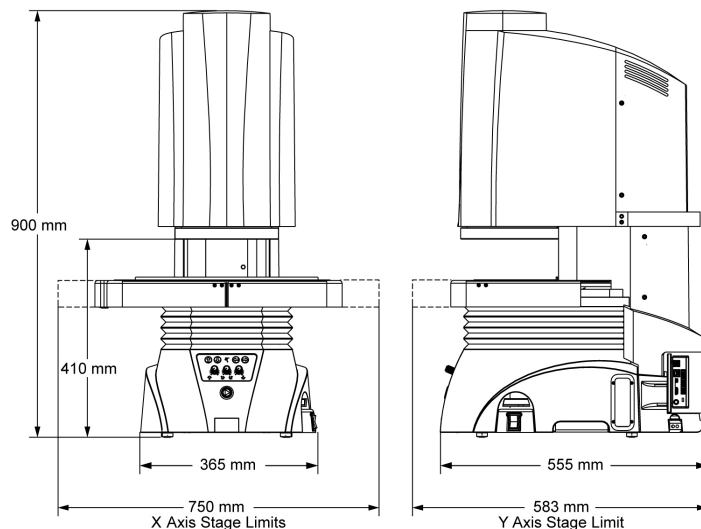
SNAP™ 300



Measure-X software provides users with a simple, powerful interface for instant 2D measurement and auto program generation. The software also utilizes powerful GD&T based algorithms and point and click feature identification to easily program a wide variety of parts. Virtual chart gaging, profile analysis tools and integrated reporting allow for quick and easy output of measurements.



ZONE3 uses innovative features to automatically generate measurement routines resulting in faster programming and run times. Parallel Processing combined with intelligent routine Optimization can be used to measure as many features as can be seen simultaneously.



System Weight: 65 kg
Shipping Weight: 125 kg

	Standard	Optional
Measuring Unit	Rigid, cast aluminum base; nickel plated worktable, with fixture holes, removable stage glass, 4 kg recommended max payload	
Stage	Motorized 150 mm X, 50 mm Y, and 75 mm Z axis (focus)	
Maximum Measuring Range (XY)	250 mm x 150 mm	
Rotary Axis		Miniature Servo Rotary (MSR™)
Optics	Telecentric, dual optical magnification with 4x high magnification lens	Telecentric, dual optical magnification 10x high magnification lens in lieu of 4x lens
Illumination	Substage LED profile, coaxial LED surface, and programmable 8-sector LED oblique ring light	
Metrology Camera	Large field megapixel metrology camera	
Field of View	Low Mag: 100 mm Ø 4x High Mag: 32 mm x 32 mm	10x High Mag: 13 mm x 13 mm
Max Digital Zoom	Low Mag: 42.2 mm x 42.2 mm 4x High Mag: 10.7 mm x 10.7 mm	10x High Mag: 4.3 mm x 4.3 mm
Depth of Field	Low Mag: 50 mm 4x High Mag: 10 mm	10x High Mag: 2 mm
Working Distance	Low Mag: 115 mm 4x High Mag: 115 mm	10x High Mag: 115 mm
Controls	GO button, illumination controls, push-button controls for motorized XY stage, and toggle switch for Z motion control	
Software	Metrology Software: Measure-X Measure and Compare	Metrology Software: ZONE3 Express, Prime or Pro in lieu of Measure-X Productivity Software: Measure-X Analyze, SmartFit® 3D, EVOLVE® Suite (Design, EVOLVE SPC, Manufacturing, SmartProfile®) Offline Software: Measure-X or ZONE3
System Controller	Windows® based, with up-to-date processor and networking/communication ports	
Controller Options		24" flat panel LCD monitor, or dual 24" flat panel LCD monitors, keyboard, 3-button mouse (or user supplied)
Power Requirements	100-120 VAC or 200-240 VAC, 50/60 Hz, 1 phase, 400 W	
Safe Operating Environment	15-30 °C, non-condensing	
Rated Environment	Temperature 18-22 °C, stable to ± 1 °C, max rate of change 1 °C / hour, max vertical gradient of 1 °C / meter; 30-80% humidity; vibration <0.001g below 15 Hz	
XY FOV Accuracy (E₂)	Low Magnification Lens: (4.0 + L/50) µm 4X High Magnification Lens: (2.0 + L/50) µm	10x High Magnification Lens: (1.0 + L/50) µm
XY Area Accuracy (E₂)	(7.0 + L/50) µm	

Accuracy is evaluated with a QVI verification procedure where "L" is measured length in millimeters. Specifications apply within the rated environment. Optical specifications apply at the maximum optical and digital magnification of the specified configuration. XY FOV Accuracy applies with an evenly distributed load up to 2.5 kg in the standard measuring plane. The standard measuring plane is defined as perpendicular to the optical axis within 0.5 mm, and within 5.0 mm of best focus. This equipment complies with EMC directive EN IEC 61326-1, Class A.



Confidence. When Results Matter.™

World Headquarters: Rochester, NY, USA • 585.544.0400 • www.ogpnet.com

OGP Shanghai Co, Ltd: Shanghai, China
86.21.5045.8383/8989 • www.smartscope.com.cn

OGP Messtechnik GmbH: Hofheim-Wallau, Germany
49.6122.9968.0 • www.ogpmesstechnik.de

Optical Gaging (S) Pte Ltd: Singapore • 65.6741.8880 • www.smartscope.com.sg