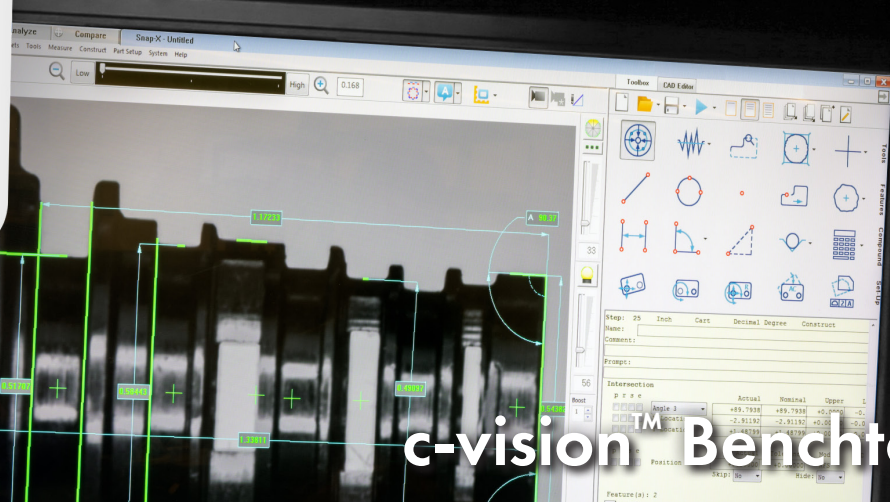




# c-vision Video Contour Projector®



c-vision Benchtop

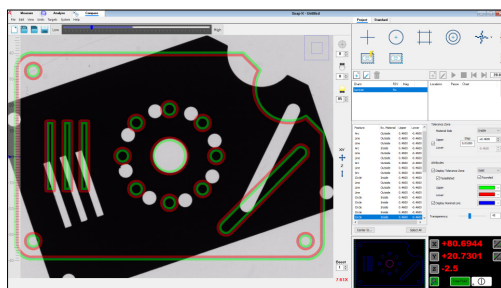
**c-vision Benchtop**, the ultimate shop floor video contour projector, has the largest measuring range in its class. c-vision Benchtop offers:

- **Accurate Image/Low Distortion –**  
Provided by the telecentric, wide field dual magnification optical system with advanced digital imaging technology. The AccuCentric® assembly automatically compensates when switching between magnifications.
- **Rugged Design –**  
The motorized XY table motion is driven by precision linear scales and fine adjusters. All LED illumination provides ultra-bright, long life. The helix stage is perfect for checking threads, and optional swing-away lamphouse provides agility in loading larger parts.
- **Measure-X®: Powerful Software –**  
Display standard and custom overlay charts in Compare mode; Launch Measure mode for fully automatic video measurement; perform GD&T fitting in Analyze mode.

## Easy to Use, Dual-Magnification Benchtop Video Contour Projector

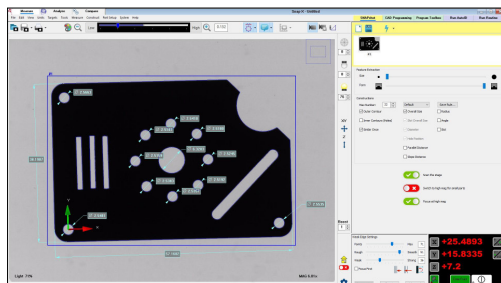


Rugged horizontal optical comparator, compact footprint that uses very little floor space. Shown with optional LED ring light.



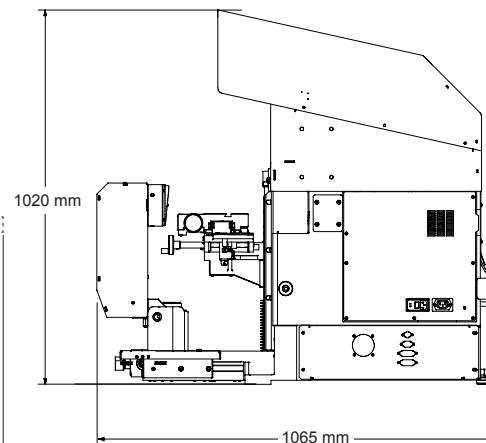
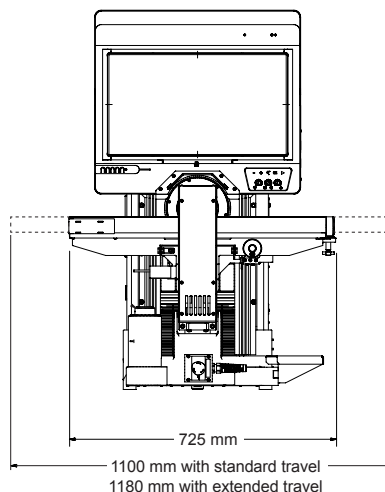
## Measure-X Compare Software

Measure-X Compare software provides a range of standard comparator charts for virtual gaging such as centerline and radius, as well as custom charts based on the part CAD design.



## Measure-X Measure Software

Measure-X Measure software provides fully automatic video measurement.



System Weight: 270 kg  
Shipping Weight: 325 kg

	Standard		Optional
XYZ Travel	380 x 150 x 50 mm		450 x 150 x 50 mm
XY Scale Resolution	1 µm		0.5 µm
Drive System	Motorized with variable speed joystick control and manual fine adjustment		
Worktable	Hard coat anodized aluminum worktable, 510 mm x 130 mm, with dovetail fixturing slot with 30 kg load capacity		
Helix Angle Range	± 7.5° with pivoting worktable assembly and zero stop		
Throat Clearance	250 mm		
Optics	Dual magnification with six field of view sizes, fully telecentric, long depth of field, upright and fully corrected image		
Illumination	Green LED profile light with continuously variable intensity		Green LED oblique (dark field) ring illuminator with eight selectable patterns. Green LED through-the-lens surface light with continuously variable intensity control.
Magnification Lenses	<b>Low Magnification Lens</b> 80 mm Field of View (FOV) 20 mm Depth of Field (DOF) 100 mm Working Distance (WD)	<b>4x High Magnification Lens</b> 20 mm Field of View (FOV) 5 mm Depth of Field (DOF) 100 mm Working Distance (WD)	
Metrology Camera	High density megapixel metrology camera		
Software	Measure-X Measure and Compare		Measure-X Analyze, Measure-X Offline, EVOLVE® SPC
System Controller	Standard system controller with networking and communication ports		
Accessories			Motorized rotary indexer; Calibration reticles; Swing away lamphouse; Ergonomic, motorized adjustable height stand; Steel weldment stand; Rotary vise; Staging centers and V-blocks
Power Requirements	100-120 VAC or 200-240 VAC, 50/60 Hz, 1 phase, 800 W		
Safe Operating Environment	15°-30° C, non-condensing		
Rated Environment	Temperature 18°-22 °C, stable at ± 1 °C, max rate of change 1 °C/hour, max vertical gradient of 1 °C/meter; 30%-80% humidity; vibration <0.001g below 15 Hz		
Stage Accuracy (E <sub>2</sub> )	(7.5 + L/100) µm		
Field of View Accuracy (E <sub>2</sub> )	Low Mag: 7.5 µm High Mag 4x: 4.0 µm		

Accuracy is evaluated with a QVI verification procedure where "L" is measured length in millimeters. Specifications apply within the rated environment. Standard optical specifications apply at the maximum optical magnification of the standard configuration. XY Accuracy applies with an evenly distributed load up to 5 kg in the standard measuring plane. The standard measuring plane is defined as perpendicular to the optical axis within 0.5 mm, and within 5.0 mm of best focus. Depending on load distribution, accuracy at maximum payload may be less than standard. This equipment complies with EMC directive EN IEC 61326-1, Class A.



Confidence. When Results Matter.™

World Headquarters: Rochester, NY, USA • 585.544.0400 • [www.ogpnet.com](http://www.ogpnet.com)

OGP Shanghai Co, Ltd: Shanghai, China

86.21.5045.8383/8989 • [www.smartscope.com.cn](http://www.smartscope.com.cn)

OGP Messtechnik GmbH: Hofheim-Wallau, Germany

49.6122.9968.0 • [www.ogpmesstechnik.de](http://www.ogpmesstechnik.de)

Optical Gaging (S) Pte Ltd: Singapore • 65.6741.8880 • [www.smartscope.com.sg](http://www.smartscope.com.sg)